

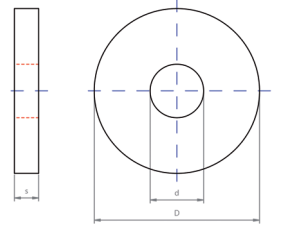
# Washers

## PLAIN WASHERS

DIN 440 WHITE ZINC PLATED



Forma R



FOR METRIC	d	D	s	DIN 440 WHITE ZINC PLATED
M-5	5,5	18	2	•
M-6	6,6	22	2	•
M-8	9	28	3	•
M-10	11,5	34	3	•
M-12	14	44	4	•
M-16	18	56	5	•
M-20	23	72	6	•